



## Pocket Guide

October 11-22



### CAROLINA LIGHTS

A Drive-through Holiday Light Show  
at the Fairgrounds

## Dec. 8 – 24

CLOSED MONDAYS

**50% OFF** Oct. 11-22

[SCStateFair.org/Carolina-Lights](http://SCStateFair.org/Carolina-Lights)

### SUNDAY, Oct. 15

Noon - 9 p.m.   Walk for Life Day
Dairy Cattle Show • Afternoon
Youth Horse Show • Afternoon
Mr. Puppet • 12:30   2:30   6:30
Swine Costume Contest & Shows • 1
Swiftly Swine • 1   2:30   4   5:30   7
Ron Diamond • 1:30   5:30   7:30
The String Showdown • 1:30   4   7
CIRCUS at the Fair • 2   4:30   7:30
Columbia's Praise Sunday • 4
Pumpkin Decorating Contest • 4

### MONDAY, Oct. 16

11 a.m. – 9 p.m.   College Day & Military Appreciation Day
Visit the Swine • All Day
Swiftly Swine • 1   2:30   4   5:30   7
Marc Dobson • 1:30   3   5
The String Showdown • 1:30   4   7
CIRCUS at the Fair • 2   4:30   7:30
Ron Diamond • 4   6:30   8:30
Jason Sikes Tribute to Elvis • 7



**SCAN HERE**  
to go to [SCStateFair.org](http://SCStateFair.org)  
for the most up-to-date  
information.

### WEDNESDAY, Oct. 11

Noon – 9 p.m.   \$5 Admission Day
Paso Fino Exhibition • 12
Swiftly Swine • 1   2:30   4   5:30   7
Mr. Puppet • 1:30   3   5
The String Showdown • 1:30   4   7
CIRCUS at the Fair • 2   4:30   7:30
Best Party Appetizer Contest • 4
Ron Diamond • 4   6:30   8:30
Boiled Peanut Eating Contest • 5:30
The Groove Machine • 7

Check [SCStateFair.org](http://SCStateFair.org) for daily  
performance times. Dates and times may  
change without prior notice.

### THURSDAY, Oct. 12

11 a.m. – 9 p.m.   SC Farm Bureau Day & Military Appreciation Day
Paso Fino Exhibition • 12
Swiftly Swine • 1   2:30   4   5:30   7
Mr. Puppet • 1:30   3   5
The String Showdown • 1:30   4   7
Best Caramel Cake Contest • 2
CIRCUS at the Fair • 2   4:30   7:30
Ron Diamond • 4   6:30   8:30
Tokyo Joe • 7

### FRIDAY, Oct. 13

11 a.m. – 9 p.m.   HIS Radio 92.1 Family Day  Select Health Day
Swiftly Swine • 1   2:30   4   5:30   7
Mr. Puppet • 1:30   3   5
The String Showdown • 1:30   4   7
CIRCUS at the Fair • 2   4:30   7:30
Jr. Dairy Cattle Showmanship • 3
Ron Diamond • 4   6:30   8:30
Youth Horse Show • 5
The Afters • 7



### SATURDAY, Oct. 14

10 a.m. – 9 p.m.   Folk Fabulous Native Voices Day
Dairy Cattle Show • All Day
Youth Horse Show • 11 AM
Swine Shows • 1
Swiftly Swine • 1   2:30   4   5:30   7
Mr. Puppet • 1:30   3   5
The String Showdown • 1:30   4   7
CIRCUS at the Fair • 2   4:30   7:30
Scarecrow Decorating Contest • 2
Ron Diamond • 4   6:30   8:30
The Regulars • 7

### SUNDAY, Oct. 15

Noon - 9 p.m.   Walk for Life Day
Dairy Cattle Show • Afternoon
Youth Horse Show • Afternoon
Mr. Puppet • 12:30   2:30   6:30
Swine Costume Contest & Shows • 1
Swiftly Swine • 1   2:30   4   5:30   7
Ron Diamond • 1:30   5:30   7:30
The String Showdown • 1:30   4   7
CIRCUS at the Fair • 2   4:30   7:30
Columbia's Praise Sunday • 4
Pumpkin Decorating Contest • 4

### MONDAY, Oct. 16

11 a.m. – 9 p.m.   College Day & Military Appreciation Day
Visit the Swine • All Day
Swiftly Swine • 1   2:30   4   5:30   7
Marc Dobson • 1:30   3   5
The String Showdown • 1:30   4   7
CIRCUS at the Fair • 2   4:30   7:30
Ron Diamond • 4   6:30   8:30
Jason Sikes Tribute to Elvis • 7



**SCAN HERE**  
to go to [SCStateFair.org](http://SCStateFair.org)  
for the most up-to-date  
information.

### TUESDAY, Oct. 17

11 a.m. – 9 p.m.   Future Farmer's of America Day   Folk Fabulous Blue Grass Day   Physics Day
Physics Day • 11 AM - 2 PM
Jr. Market Hog Shows • Afternoon
Swiftly Swine • 1   2:30   4   5:30   7
Dennis Lee • 1:30   3   5
The String Showdown • 1:30   4   7
CIRCUS at the Fair • 2   4:30   7:30
Ron Diamond • 4   6:30   8:30
Carolina Bluegrass Style • 7

### LUNCH BUNCH

Weekdays noon - 2 p.m.  
Pay your entry fee for a refundable \$20 ticket and return to the  
ticket booth by 2 pm to get your money back.

### WEDNESDAY, Oct. 18

11 a.m. – 9 p.m.   Seniors Day
Swiftly Swine • 1   2:30   4   5:30   7
Dennis Lee • 1:30   3   5
The String Showdown • 1:30   4   7
CIRCUS at the Fair • 2   4:30   7:30
Ron Diamond • 4   6:30   8:30
JB SamSon • 7



### THURSDAY, Oct. 19

11 a.m. – 9 p.m.   Exceptional Citizens Day   Military Appreciation Day
Beef Cattle Show • All Day
Gibson Works • All Day
Sheep Show • All Day
Sensory Friendly Morning • 10 AM - 12 PM
Swiftly Swine • 1   2:30   4   5:30   7
The String Showdown • 1:30   4   7
Dennis Lee • 1:30   3   5
CIRCUS at the Fair • 2   4:30   7:30
Ron Diamond • 4   6:30   8:30
Faith Schueler • 7

### FRIDAY, Oct. 20

11 a.m. – 9 p.m.   SC Department of Agriculture Day
Beef Cattle Show • All Day
Donkey & Mule Show • All Day
Phillip Simmons Blacksmith Guild • All Day
Sheep Show • All Day
Swiftly Swine • 1   2:30   4   5:30   7
The String Showdown • 1:30   4   7
Dennis Lee • 1:30   3   5
CIRCUS at the Fair • 2   4:30   7:30
Jr. Beef Scholarship Contest • 4
Ron Diamond • 4   6:30   8:30
Dracula Ballet • 7

SATURDAY, Oct. 21

10 a.m. – 9 p.m. | 4-H Day | Folk Fabulous  
Gullah Geechee Day

Donkey & Mule Show • All Day

Jr. Beef Cattle Show • All Day

Phillip Simmons Blacksmith Guild • All Day

4H Poultry & Rabbit Contests • 10 AM

Dairy Goat Show • Afternoon

Swiftly Swine • 1 | 2:30 | 4 | 5:30 | 7

Dennis Lee • 1:30 | 3 | 5

The String Showdown • 1:30 | 4 | 7

CIRCUS at the Fair • 2 | 4:30 | 7:30

Ron Diamond • 4 | 6:30 | 8:30

David Rodriguez & The Latin Hustle • 7

SUNDAY, Oct. 22

Noon – 8 p.m.

Phillip Simmons Blacksmith Guild • All Day

Dairy Goat Show • Afternoon

Jr. Market Goat Show • Afternoon

Jr. Market Lamb Show • Afternoon

Dennis Lee • 12:30 | 2:30 | 6:30

Swiftly Swine • 1 | 2:30 | 4 | 5:30 | 7

Ron Diamond • 1:30 | 5:30 | 7:30

The String Showdown • 1:30 | 4 | 7

CIRCUS at the Fair • 2 | 4:30 | 7:30

Kelontae Gavin • 4



### First Aid Station

Open 9 a.m. - midnight in the  
Heath Building (Guest Services).



### Security

Command post located across  
from Netterfield's stage. Richland  
County Sheriff's Department  
Deputies patrol 24/7.



### Information Booths

Located at the info booth at  
the South Gate and in Guest  
Services in the Heath Building  
at the North Gate.



### Hand-Washing Stations

Located around the livestock  
barns; S.C. State Fair guests are  
encouraged to use the hand  
washing stations frequently  
and especially upon exiting the  
livestock area.



### Paging / Sound Booth

Located in the Heath Building  
(Guest Services).



### Lost and Found

Located in the Heath Building  
(Guest Services).

DAILY

## NOT TO MISS:

Check [SCStateFair.org](https://www.southcarolinastatefair.org) for full  
descriptions and more listings.

### American Tribute

Noon Daily

### Carl Brunson, One Man Band

Main Street Stage

### Commerford Petting Zoo

Academic Avenue

### Sandscapes

Goodman Building

### Ernest Lee Artwork

Small Stock Building

### Fine Art & Student Art Exhibits

Cantey Building

### From Field to Fair

Ellison Building

### McLeod Farms

Ellison Building

### Heritage Village

Hampton Plaza

### Smallstock

Small Stock Building

### Home & Craft

Moore Building

### Cast in Bronze

Near South Gate

### Remembering Our Fallen

Ruff Building

### Special Flower Shows

Cantey Building

### Princess Diana: Accredited Access Exhibition

Rosewoods Ballroom

### Shopping

Goodman Building

### ROVING ENTERTAINMENT:

Safari Sam & Oscar the  
Awesome Ostrich

Marc Dobson:  
One Man Band

Reflector and Sparkle

Denny the Clown

Buford Bear

Animal Cracker

Conspiracy

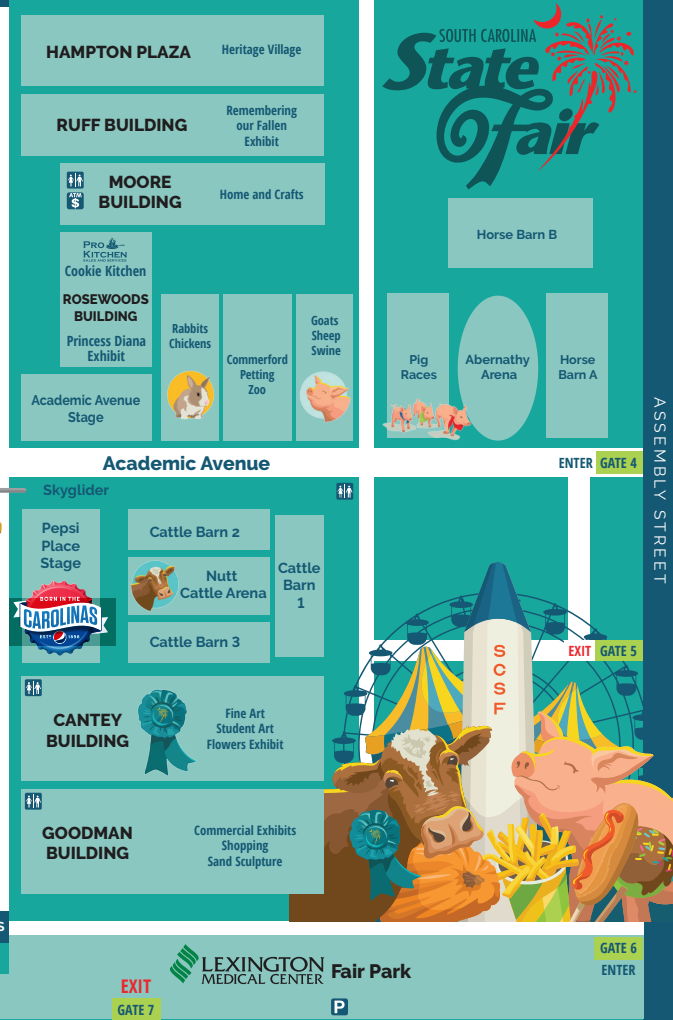
OSEWOOD DRIVE

GATE 12



ROSEWOOD DRIVE

GATE 1



GEORGE ROGERS BOULEVARD

### LOCATION KEY

● BIG TOP CIRCUS TENT

● PEPSI PLACE STAGE

● CANTEY BUILDING

● NEAR PIGS RACES

● ACADEMIC AVENUE STAGE

● MOORE PLAZA

● ABERNATHY ARENA

● NEAR ABERNATHY ARENA

● NUTT CATTLE ARENA

● GOATS, SHEEP, SWINE

● NETTERFIELD STAGE

● ELLISON BUILDING

MAP KEY



RESTROOMS



INFORMATION



WHEELCHAIR  
RENTAL



RIDE  
TICKETS



STROLLER  
RENTAL



SECURITY



ATM



PARKING

ASSEMBLY STREET